

2018 Canadian Fabry Disease Guidelines

Canadian Fabry Disease Treatment Guidelines 2018

**Sandra Sirrs, Daniel G. Bichet, R. Mark Iwanochko, Aneal Khan, David Moore,
Gavin Oudit and Michael L. West**

Sherbrooke Quebec

October 6 2018

Fabry disease is an X-linked lysosomal storage disease characterized by the development of hypertrophic cardiomyopathy, nephropathy with chronic renal failure and stroke. This condition arises from the deficiency of the lysosomal enzyme alpha-galactosidase A with the resultant accumulation of glycosphingolipids in all cells and tissues. This deposition damages and kills cells resulting in premature death and disability, particularly for affected hemizygotes. Treatment for all patients involves control of cardiovascular risk factors and supportive care for issues related to living with a chronic disease; disease specific treatment with enzyme replacement therapy (ERT) or chaperone therapy may have benefit for some individuals. Recombinant human alpha-galactosidase A enzyme is available in two forms, agalsidase-alfa (Replagal™; Shire Inc.) and agalsidase-beta (Fabrazyme®; Sanofi-Genzyme Corporation). Migalastat (Galafold™; Amicus Therapeutics) is the first chaperone therapy for Fabry disease approved in Canada. Clinical guidelines for the use of ERT in Canada were first developed in 2005 by an expert committee based upon the medical literature and this process has been repeated annually since 2007. As new therapies are developed (chaperone therapy, substrate reduction therapy), these will be incorporated into the Canadian Fabry disease treatment guidelines.

These Fabry disease treatment guidelines currently form the basis for disease specific therapy in Canada, specifically in the multicentre Canadian trial of ERT in Fabry Disease, known as the Canadian Fabry Disease Initiative (CFDI). The CFDI has now been transitioned to a national patient registry to continue to track the progress of Canadian patients. These guidelines are intended to apply to all patients with Fabry disease in Canada regardless of gender and age.

Participants in 2018 review

Dr. Daniel G. Bichet, Dr. Mark Iwanochko, Dr. Aneal Khan, Dr. Gavin Oudit, Dr. Sandra Sirrs and Dr. Michael West

Dr. David Moore, although not present at the 2018 meeting, has been involved for multiple previous editions of the guidelines and his work remains as part of the 2018 version.

Disclosures for all participants are included below.

Process

Annual literature review has been conducted since the onset of the CFDI to inform the guideline process; for the 2018 guidelines, available literature on Fabry disease published from January 1 2017 to July 27 2018 was determined by an electronic search of Medline and Pubmed using the search terms Fabry and Fabry disease limited to

abstracts, English language and research articles in humans. A list of the articles reviewed in 2018 is provided in Appendix 1. Single case reports and review articles were not included in the review unless new information was presented. Standards of evidence were modified from those previously published (Canadian Task Force on the Periodic Health Examination 1979; see Table 2). Consensus was reached by discussion.

Support

Financial support for this guideline review was from the Canadian Fabry Disease Initiative.

Diagnosis of Fabry disease

The diagnosis of Fabry disease requires the synthesis of clinical, biochemical, molecular and pathologic criteria. Given the challenges with each of these criteria outlined below, it is recommended that a patient have at least 3 of the 4 criteria before making a diagnosis of Fabry disease (van der Tol 2014) although if characteristic pathological findings are present, fewer criteria may be required to point to the correct diagnosis.

a) Clinical criteria

- i) None of the features of classical Fabry disease are diagnostic in their own right. Some features of Fabry disease (for example, nephropathy, hypertrophic cardiomyopathy, stroke) are very nonspecific with a broad differential diagnosis. Other features of Fabry disease (like cornea verticillata, biopsy-proven angiokeratomas) have a more limited differential diagnosis although there are still conditions other than Fabry disease which can cause these more specific findings (e.g. amiodarone therapy can cause similar corneal changes). For this reason, clinical findings alone cannot be used to confirm the diagnosis of Fabry disease although more weight can be given in the diagnostic process to those findings (corneal verticillata, biopsy proven angiokeratomas) of higher specificity.

b) Biochemical criteria

- i) Levels of alpha-galactosidase activity measured in whole blood, plasma or leukocytes that are severely decreased or absent (below 5% of mean) are strongly suggestive of Fabry disease in male hemizygotes or female homozygotes. However, higher levels have been reported in many confirmed

cases and are more likely in those patients presenting with a late onset cardiac variant. Females who are Fabry disease heterozygotes may also have enzyme activity levels that are modestly decreased or normal despite other clear manifestations of Fabry disease. The presence of reduced levels of enzyme activity in a related male in a kindred should be considered as strong evidence that Fabry disease is present. Documentation of reduced levels of leukocyte alpha-galactosidase activity is the preferred biochemical marker to use in the evaluation of a patient for possible Fabry disease. In families with variants of unknown significance (VUS), the absence of reduced levels of enzyme activity in a male with the VUS is strong evidence that Fabry disease may not be present.

- ii) Biomarkers in urine and plasma such as globotriaosylceramide (Gb3) and sphingosine-globotriaosylceramide (Lyso-Gb3) are often elevated in patients with Fabry disease although the correlation of these biochemical markers with clinical outcomes remain unclear. Conditions other than Fabry disease can cause elevations in urine Gb3 (Schiffmann 2014). Lyso-Gb3 is a more sensitive marker than Gb3 but still may be normal in confirmed cases, especially in women. The presence of elevated biomarkers then can be used as a feature pointing towards Fabry disease but is not diagnostic. The absence of elevated biomarkers does not rule out a diagnosis of Fabry disease particularly in female heterozygotes.

c) Molecular criteria

- i) Previously reported mutations - There are databases of numerous mutations which have been reported in cases of Fabry disease. However, it is known that there is a high rate of inaccuracy in these databases (Bell 2011). For this reason, the presence of a DNA change that has been reported to cause Fabry disease must be combined with clinical, biochemical and pathological criteria to confirm the diagnosis of Fabry disease
- ii) Variants of uncertain significance (VUS) – For DNA changes which have not been previously reported, there are several models which are often used to try and predict pathogenicity but the accuracy of any of these models is limited with most models correctly predicting that a variant is benign or pathogenic in fewer than 80% of the cases (Walters-Sen 2015). Modeling of VUS in cell lines or other systems can be done by some research labs but is not widely available. The presence of a VUS then should not be used as a diagnostic criterion for Fabry disease consistent with current consensus guidelines (Richards 2015).

- iii) Co-existent disease processes – multiple reports have suggested that GLA mutations can coexist with other mutations causing hypertrophic cardiomyopathy in up to 0.4% of cases (Frustaci 2016 and others). Testing for Fabry disease should be done on all patients with idiopathic hypertrophic cardiomyopathy as part of gene panel screening for genetic causes of this condition. We recommend that patients whose main manifestation of Fabry disease is cardiac hypertrophy undergo comprehensive panel testing to exclude other known diagnoses. If a second diagnosis is present (e.g. a sarcomeric gene mutation), pathologic analysis of a myocardial biopsy may be considered as not all patients with a dual diagnosis may have significant storage material to benefit from ERT or chaperone therapy.

d) Pathologic criteria

- i) Characteristic changes suggestive of Fabry disease can be found on biopsies of kidney, heart, skin and other tissues. While a pathologist may be able to identify that storage material is present in tissues, they will not be able to characterize the nature of this accumulated material without doing specific immunohistochemical stains for Gb3, a tool that is not widely available. Also, phenocopies of Fabry disease have been reported where Gb3 storage was documented in tissue (Appelland 2014). Thus, while the finding of characteristic changes in a biopsy is strong evidence for a diagnosis of Fabry disease, it should be combined with at least one other diagnostic feature from the biochemical or molecular categories to confirm the diagnosis). Biopsy of clinically affected tissues can also provide useful prognostic information (such as irreversible changes like the degree of glomerulosclerosis in patients with nephropathy or the degree of fibrosis on a heart biopsy). Biopsy of clinically involved tissue(s) is strongly encouraged in the work up of all patients with Fabry disease. Skin biopsy, while not useful in providing prognostic information, can sometimes help in the diagnostic process (if read by an experienced pathologist) by documenting the presence of glycosphingolipids. This technique, compared with biopsy of internal organs i.e. kidney, is easy to perform and only minimally invasive.

A summary of these diagnostic criteria is provided in Table 1 below.

Table 1. Summary of diagnostic criteria for Fabry disease*

Criterion	Relevant finding	Points towards diagnosis	Comment
Clinical features	Cornea verticillata or biopsy-proven angiokeratomas	Presence of either or both of these will contribute 1 point	Need to exclude other causes
Alpha-galactosidase activity in plasma or leukocytes	Below 5%	1 point	Activity may not be reduced in females but low activity in a male member of the family cohort would contribute towards the diagnosis
Elevated plasma and/or urine biomarkers	Above reference range for lab; lyso-Gb3 is preferred	1 point	Conditions other than Fabry disease can elevate biomarkers
Molecular change	Mutation defined in literature as disease causing	1 point	High rate of error in annotation of mutations in available databases; the presence of a VUS should not be used to contribute towards the diagnosis
Pathologic findings	Presence of typical features of Fabry disease on biopsy of involved tissue	2 points in target organs (kidney, heart) 1 point in other organs (skin)	Should be interpreted by a pathologist with expertise in Fabry disease

Diagnosis of Fabry disease is likely in patients with 3 or more points

*Adapted from Smid BE et al. Uncertain diagnosis of Fabry disease; Consensus recommendation on diagnosis in adults with left ventricular hypertrophy and genetic variants of unknown significance. *Int J Cardiol.* 2014;177:400-8.

Disease specific therapy of Fabry disease

While all patients with Fabry disease may benefit from cardiovascular risk factor reduction strategies and other aspects of general medical care (outlined below), not all patients with Fabry disease will benefit from disease specific therapy. There are currently two forms of disease specific therapy for Fabry disease (ERT and chaperone therapy) and other modalities of treatment including substrate reduction therapy (SRT) are in development (Guerard 2017). Once a diagnosis of Fabry disease is confirmed, there should be a thorough evaluation of whether disease-specific therapy, either ERT or chaperone, is likely to provide clinical benefit. The indication for therapy should precede the decision on which type of therapy should be used. The first decision about any patient with a confirmed diagnosis of Fabry disease is **SHOULD** the patient receive disease specific therapy. In those patients in whom benefit from disease specific therapy can be anticipated, then the next question is **WHICH** therapy should be used. Disease specific therapy should be considered in all patients with documented Fabry disease, of any age and either sex, who meet the criteria outlined below for disease-specific therapy. In all cases, diagnostic accuracy is essential with exclusion of other possible etiologies. The treating physician has the responsibility of ensuring that there is a high likelihood of patient benefit and a low risk of adverse effects of disease specific therapy. A diagnosis of Fabry disease in the absence of clinical evidence of organ involvement is NOT an indication for disease specific therapy. Some manifestations of Fabry disease are not improved by disease specific therapy such as the risk of stroke while others may be improved by this therapy such as the rate of decline of renal function. Thus, disease specific therapy should be considered when there are manifestations for which this therapy is of proven benefit.

Choice of therapy

ERT was the first form of disease specific therapy developed for Fabry disease and is the form of treatment for which the most robust data on the effects of therapy are available. ERT is appropriate for all patients with Fabry disease who have indications for disease specific therapy, regardless of mutation status. Chaperone therapy, by contrast, only works in patients who have mutations which are amenable to binding by the chaperone and thus can only be considered in a subset of patients. In Canada, the only chaperone for Fabry disease currently approved by Health Canada is migalastat. Migalastat has been shown to have favorable effects versus placebo on renal function and left ventricular hypertrophy (Germain 2016) and reduce diarrhea (Schiffmann 2018) in patients with amenable mutations. Patients on long term ERT with amenable mutations switched to migalastat (Hughes 2017) showed stability in renal function and cardiac parameters. However, both of these clinical trials involved patients with very

mild disease manifestations (eGFR 89-94 ml/min/1.73m², LVMI 94-97 g/m²) and did not include patients with high levels of proteinuria (mean albumin/creatinine ratio 13-27 and no patients with nephrotic range proteinuria) which is a known risk factor for adverse cardiovascular and renal events in Fabry disease. These trials are also of short duration (18-24 months). Published data are not yet available on the effects of migalastat in patients with more advanced disease or with duration of therapy beyond 2 years. It should also be noted that switching from ERT to oral therapy with migalastat did not result in an improvement in quality of life indices which remained stable through the switch (Hughes 2017).

To determine if a patient has an amenable mutation, clinicians can look up the mutation in a database provided by the manufacturer (<http://www.galafoldamenabilitytable.com/hcp/>). The definition of an amenable mutation is one that increases activity of alpha galactosidase A in an *in vitro* cell culture system (human embryonic kidney or HEK cells) by 1.2 times the baseline activity with an absolute value for enzyme activity of 3% or greater when compared with wildtype values (Benjamin 2017). Many amenable mutations will increase the absolute values of enzyme activity far above 3% of wild type activity but clinicians should be aware of these thresholds to define a mutation as amenable. Clinicians desiring information about the absolute values of enzyme activity (expressed as % of the wild type) of any given mutation when expressed in the HEK assay in the presence of migalastat may request this information from the manufacturer or consult the supplementary tables published by Benjamin (2017). This HEK assay has been shown to correlate with surrogate markers of disease activity like lyso-Gb3 and kidney Gb3 deposits (Benjamin 2017). However, the tools to define an amenable mutation have already evolved (e.g. in the study by Germain *et al* [2016], 17 of the 67 subjects thought to have amenable mutations using an older technique were not amenable by the newer HEK assay). Clinicians need to be aware that GLA mutations thought amenable to chaperone therapy with migalastat could possibly change over time if the defining assay changes. In addition, the amenability status of a GLA mutation should be re-evaluated in Fabry disease patients whose clinical monitoring parameters deteriorate on migalastat therapy.

Choice of therapy needs to be individualized for each patient in discussion with their physician. ERT is the only therapy appropriate for patients who do not have amenable mutations. For patients who do have amenable mutations in whom ERT or chaperone therapy might be possible, several factors to consider include:

1. Degree of organ involvement – there are no published data on the effects of migalastat in Fabry disease patients with more advanced disease (e.g. chronic kidney disease (CKD) stage 2 or higher, more extensive left ventricular hypertrophy or nephrotic range proteinuria). The Canadian label indicates that

the drug should not be used in patients with eGFR <30 ml/min/1.73m². In patients with more advanced disease (but whose eGFR is above 30 ml/min/1.73m² in whom migalastat therapy may be considered) newly starting on disease specific therapy, in addition to considering treatment with ERT or migalastat, consideration could be given to a third option such starting with ERT and then considering “step down” to oral therapy after 3-5 years if the patient has a good response although there are not data at present to evaluate this sequential treatment strategy.

2. Patient compliance – some patients, even with advanced disease manifestations, may prefer to switch to migalastat therapy to avoid further intravenous infusions with the possible issues of difficult intravenous access, antidrug antibodies and infusion-associated reactions. However, switching from ERT (where a nurse supervises the infusions) to migalastat therapy (where the patient has to remember to take the pills every second day) may not be appropriate for patients who have difficulty remembering to take their medications or noncompliance with ERT infusions.
 - a. Information on compliance with any form of disease specific therapy should be reviewed on a regular visit (for example by reviewing prescription or infusion records) and the patient should be aware of this review. Patients and physicians should discuss the importance of compliance and agree that the drug will be discontinued for patients who do not meet pre-agreed on thresholds of compliance.
3. Patient age – although oral therapy would be preferable in the treatment of pediatric patients to avoid the need for biweekly venipuncture, migalastat is not licensed in Canada for patients under the age of 18 years. There are also very limited data on the use of migalastat in patients 65 years of age and older although the drug is not specifically contraindicated in this age group.
4. Need for increased surveillance of response to treatment – for patients newly started on any type of disease specific therapy, assessment by their treating physician with relevant investigations including biomarkers is recommended every 3-6 months for the first 5 years of therapy and then annually thereafter if the patient is stable. However, while the available literature on migalastat suggests that it is non-inferior to ERT, this was a short term study (18 months; Hughes 2017). We would recommend that patients who are switched from ERT to migalastat be followed every 6 months for the first 3-5 years of therapy to ensure their clinical parameters are stable. Patients should be advised PRIOR to starting migalastat that, if their disease parameters deteriorate, a switch to ERT may be recommended by their physician.

- a. In patients being considered for a switch of disease specific therapy from ERT to migalastat or the reverse, it is important to ensure that assessments of their cardiac (EKG, holter monitor, echocardiogram, cardiac MRI) and renal status (24 hour proteinuria, blood pressure, eGFR) as well as biomarkers (plasma and/or urine Gb3, lysoGb3) are up to date prior any treatment switch.

Choice of ERT and dose

Although the standard doses of agalsidase alfa (0.2mg/kg) and agalsidase beta (1.0mg/kg) differ, 5 and 8 year follow up data from the CFDI shows that the overall outcomes of therapy with the two drugs are equivalent (Sirrs 2014; West 2016a) and a recent metanalysis (Pisani 2017) indicated stability of renal and cardiac parameters in patients switched from agalsidase beta to agalsidase alfa during the interval of drug shortages. Longer term data from Arends et al (2018) and the CFDI (Sirrs 2018) show that overall, the two drugs are equivalent in terms of clinical outcomes. However, these more recent data suggest that there may be some advantages of agalsidase beta relative to agalsidase alfa in male Fabry patients with a classic phenotype. The rate of decline in left ventricular mass in the first year of therapy was higher in patients treated with agalsidase beta in a large cohort study but this was only significant in patients with an elevated left ventricular mass at baseline (Arends 2018). While the cohort study from Arends et al (2018) did not show a difference between the two drugs in rate of decline of renal function, 10 year data from the CFDI suggests that there is a trend to a reduced rate of decline of renal function in classical males treated with agalsidase beta rather than agalsidase alfa although the result was not statistically significant (Sirrs 2018). No differences between the two drugs were seen in women or males with nonclassic phenotypes. Antibody responses are more marked in patients treated with agalsidase beta relative to agalsidase alfa (Arends 2018). A cohort analysis by El Dib et al (2017) suggested that there was a benefit of agalsidase beta relative to placebo on renal, cardiac, cerebrovascular outcomes as well as all cause mortality. The confidence intervals for the effects of agalsidase alfa on these outcomes overlapped with the untreated group so that benefit of agalsidase alfa could not be confirmed (El Dib 2017). However, the results of this cohort analysis may be affected by the higher number of classic male patients in the agalsidase beta studies as this is the patient group which is likely to benefit most from treatment on the basis of the data from Arends et al (2018) and the CFDI (Sirrs 2018). On the basis of these data, agalsidase beta may be considered as the first option in male patients with a classic phenotype who are started on disease specific therapy. Some males with classical phenotypes may prefer

agalsidase alfa for other reasons (for example, shorter infusion times) and patient preferences should be considered in choosing a drug. Either drug could be considered for patients with nonclassic phenotypes, women, or older patients in whom total duration of treatment is expected to be less than 10 years and there may be individual patient preferences that lead to the choice of one drug or the other.

Switching ERT

There is no evidence that one agent should be considered as rescue therapy if there is poor clinical response to the other agent (Goker-Alpan 2015; Tsuboi 2014; Lenders 2015). Data concerning altered dose regimens as a means to affect outcomes are limited with mixed results (Hughes 2013; Schiffmann 2007, Schiffmann 2015). Data from the CFDI suggests that there may be an increased risk of events for the first 6 months after a drug switch (West 2016b) suggesting that optimal management would be to not switch medications if possible. Kramer et al [2017] found that patients switched from AGALB (1 mg/kg) to AGALA (0.2 mg/kg) and then back to AGALB at 1 mg/kg could attenuate but not eliminate the more rapid rate of decline of eGFR (-2.2 ml/min/1.73 m² in the dual switch group whereas eGFR in those who were not switched was stable) also suggesting that there may be some deleterious effects of the switch itself. Given the lack of data to support alternative dose and dosing and possible risks associated with the switch, considerations of changing drug, dose or dosing are best done in the setting of a formal clinical trial.

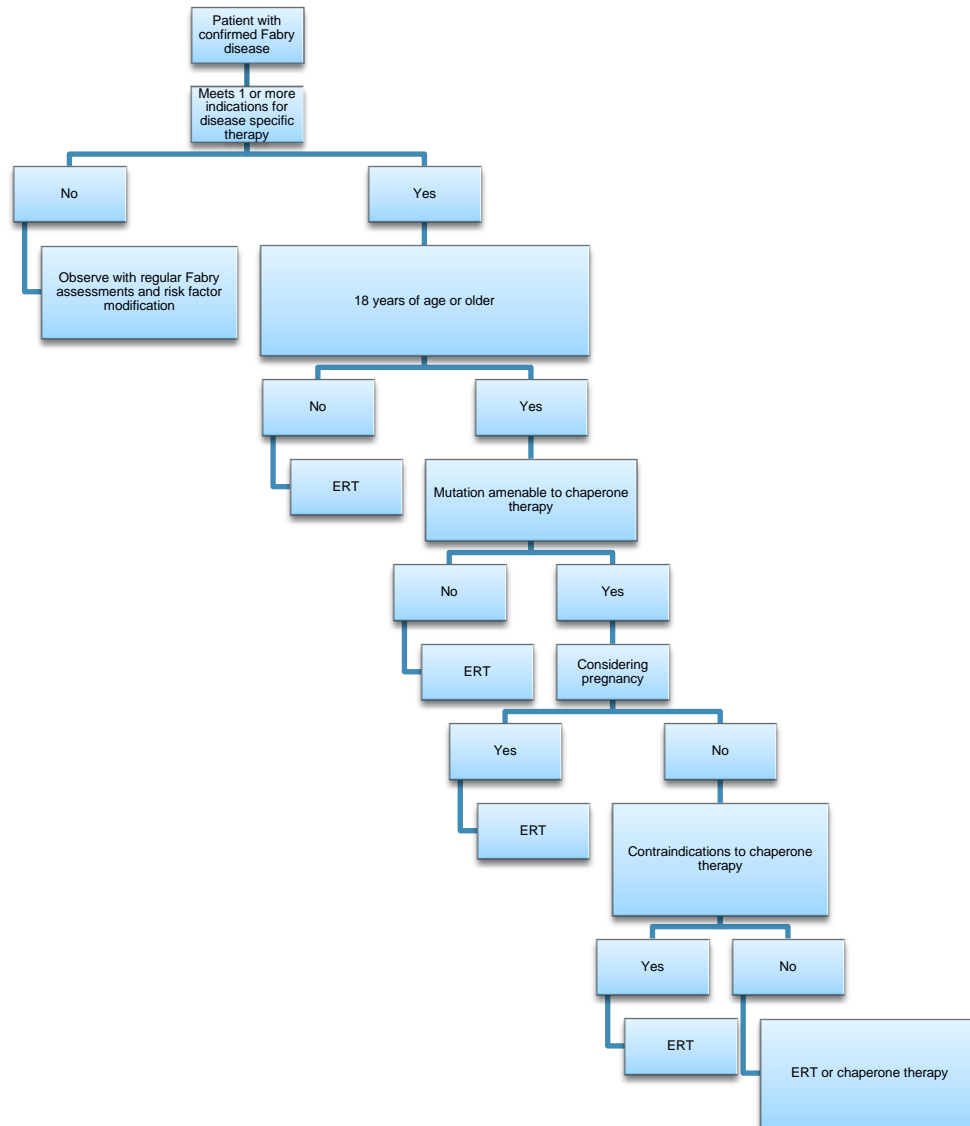


Figure 1. Decision matrix for disease specific therapy in Fabry disease

Potential benefits of disease specific therapy

Based upon current literature, there is evidence of improvement with disease specific therapy with ERT in some aspects of Fabry disease as detailed below:

- Stabilization of Fabry nephropathy with stable proteinuria and glomerular filtration rate (GFR).
- Stabilization of Fabry cardiomyopathy with stable or declining left ventricular mass index (LVMI), LV wall thickness, improvement of PR interval on EKG.
- Improvement in diarrhea, abdominal cramps or pain, nausea, vomiting and heartburn associated with Fabry disease.

Other clinical features of Fabry disease have not yet been shown to respond to disease specific therapy:

- Tachy or brady arrhythmias
- Stroke or TIAs
- Proteinuria
- Depression
- Hearing loss

Potential risks of ERT

- Increased healthcare costs due to costs of drug purchase and drug administration
- Development of infusion reactions to ERT characterized by fever, chills, edema, rash, nausea and dyspnea. Anaphylactic reactions, while rare, are possible.
- Development of anti-agalsidase antibodies; IgG antibodies may be associated with infusion reactions as detailed above, with *in vitro* inactivation of agalsidase or with increased levels of urine and plasma Gb3 as well as plasma lysoGb3 (significance currently unknown); IgE antibodies to agalsidase-beta may be associated with anaphylaxis. IgA and IgM antibodies to agalsidase-alfa have also been identified although the significance of these observations is unknown.

Potential risks of migalastat therapy

- The drug was well tolerated in clinical trials. The most common side effects which occurred more frequently than with placebo were nasopharyngitis and headache. Prescribing physicians are directed to review the product monograph for description of other side effects reported in migalastat treated patients.
- Progression of Fabry disease complications may occur in patients previously stable on ERT if their compliance with migalastat is less than their compliance with ERT.

Indications for disease specific therapy

Indications for disease specific therapy are designed to target patients for such therapies at early stages of disease progression. Data are lacking on the effects of treatment with disease specific therapy in the primary prevention setting (i.e. before there is detectable evidence of end organ involvement) so this cannot be recommended at present. However, it is also important to understand that disease specific therapy will likely be of more benefit in patients in whom irreversible manifestations of Fabry disease (e.g. cardiac fibrosis) have not yet developed. Thus, we recommend that patients who do not meet criteria for disease specific therapy at the time of diagnosis of Fabry disease be followed regularly with full assessment for development of Fabry related

organ involvement so that disease specific therapy, if needed, can be introduced at an early phase in the disease.

Renal indications

Renal disease is a common feature of Fabry disease in males but there are numerous case reports where patients with Fabry disease were found to have an alternate treatable cause for renal dysfunction on renal biopsy (Maixnerova 2013 and others). For this reason, all other causes of reduced GFR and proteinuria (including orthostatic proteinuria) need to be excluded. When reduction of GFR is present, the negative effects on GFR by concurrent medications such as ACE inhibitors, angiotensin receptor blockers, diuretics, non-steroidal anti-inflammatory drugs and other agents should be excluded. A nephrology consultation may be needed. Consideration should be given to a renal biopsy if there is any doubt as to the diagnosis. In addition to disease specific therapy, nonspecific measures appropriate for all patients with kidney disease (smoking cessation, control of dyslipidemia and proteinuria, aggressive control of hypertension) are appropriate in patients with Fabry nephropathy. As ERT does not reduce proteinuria to a significant degree, blockade of the renin-angiotensin system is important in all patients with proteinuria with the goal of reducing urine protein excretion below 500 mg/day (Warnock 2015)

Renal Disease Evidence level 1 - Grade B

1 major criterion or 2 minor criteria required

Major criteria:

- Fabry nephropathy with reduced GFR

For GFR < 60 ml/min/1.73m² chronic kidney disease (CKD) stages 3-5: at least 2 consistent estimates or measurements of GFR over a minimum of 2 months.

For GFR 60 - 90 ml/min/1.73m², CKD stage 2: at least 3 consistent estimates or measurements of GFR over at least 4 months with a GFR slope greater than age-related normal.

For GFR >135 ml/min/1.73m²: a 15% decrease in GFR or a GFR slope greater than age-related normal as measured by nuclear medicine technique. Estimated GFR is not accurate in this range and thus cannot be used.

Persisting proteinuria of 500 mg/day/1.73m² or greater without other cause.

Findings of high risk pathology (glomerular sclerosis, tubulointerstitial atrophy, fibrosis or vascular sclerosis) on renal biopsy are a major criterion in males only (see comments).

Comments:

1. GFR in adults should be estimated (eGFR) by CKD-EPI formula (Levey 2009) and in children by the Counahan-Barrett formula (Counahan 1976). Measured GFR by nuclear medicine technique should be done in adults or children if there is hyperfiltration or inconsistency in renal function. All other methods of estimating GFR such as the MDRD, Cockcroft and Gault formula or old Schwartz formulas or creatinine clearance are less accurate and should not be used (Tondel 2010; Rombach 2010). In particular, these estimates may result in false hyperfiltration readings, especially in children or teenagers. Calculations of GFR in children may be less accurate and, if treatment decisions are to be made using GFR data, clinicians are encouraged to get more accurate measurements of GFR using nuclear techniques.
2. A renal biopsy is not required as a prelude to therapy. However, if the patient has clinical indications for a renal biopsy, renal pathology in men is a major criterion if features known to be of high risk in predicting progressive renal disease (glomerular sclerosis, tubulointerstitial atrophy and fibrosis or vascular sclerosis) are present. A pathologist with extensive expertise in the interpretation of renal biopsies in patients with Fabry disease is required in order to ascertain the prognostic significance of pathological changes in the renal biopsy. Some changes (such as glycolipid deposit volume in podocytes and foot process width in Fabry nephropathy) correlate with age (Najafian 2011) while other features (glomerular sclerosis, tubulointerstitial atrophy and fibrosis or vascular sclerosis) are more effective in predicting the risk of progressive renal disease. While the presence of lamellar bodies characteristic of Fabry disease can occur in podocytes and in all renal cell types, they are not diagnostic of this condition as they can be observed in sphingolipidoses induced by chloroquine and other drugs. Given these difficulties in interpretation, clinicians are strongly encouraged to involve a pathologist with expertise in Fabry disease in renal biopsy interpretation.

Minor criteria:

- Hyperfiltration: There should be at least two (2) consistent measurements of GFR by nuclear medicine techniques at least one month apart when GFR reaches or exceeds $135 \text{ ml/min/1.73m}^2$. Hyperfiltration by eGFR as calculated by any formula is not accurate and thus not acceptable.
- Isolated proteinuria of $300 \text{ mg/day/1.73m}^2$ or greater than normal for age and gender and persistent for at least one year with exclusion of other causes.
- Renal tubular dysfunction. Fanconi syndrome and/or nephrogenic diabetes insipidus confirmed usually with abnormal water deprivation test and resistance to DDAVP.
- Hypertension of at least one year duration.

- Renal pathology in women may be taken into account as a minor criterion if the patient has indications for renal biopsy. If a renal biopsy is done, the presence of glomerular sclerosis, tubulointerstitial atrophy and fibrosis or vascular sclerosis should be considered a minor criterion in women.

Comment: The development of progressive renal disease in women is much less common than in men (Sirrs 2014). Therefore, the presence of positive renal pathology for Fabry disease in women is not a hallmark for progression of renal disease making interpretation of the significance of renal biopsy changes much less clear in women than in men.

Cardiac Disease Evidence level II-2 - Grade B

2 criteria required

Criteria:

- LV wall thickness >12 mm in males and >11 mm in females
- LV hypertrophy (LVH) by Estes ECG score must be greater than 5
- LV mass index by 2D echo 20% above normal for age
- Increase of LV mass of at least 5 g/m²/year, with three measurements over a minimum of 12 months
- Diastolic filling abnormalities by 2D echocardiogram, Grade 2 or Grade 3 diastolic dysfunction as outlined by ASE and/or the presence of speckle tracking abnormalities
- Abnormal –base to apex circumferential strain gradient
- Increased LA size on 2D echo. In parasternal long axis view (PLAX) >40 mm; Left atrial volume index > 34 ml/m²
- Cardiac conduction and rhythm abnormalities: AV block, short PR interval, left bundle branch block (LBBB), ventricular or atrial tachyarrhythmias, sinus bradycardia (in the absence of drugs with negative chronotropic activity or other causes)
- Moderate to severe mitral or aortic insufficiency
- Late enhancement of left ventricular wall on cardiac MRI
- T1 values using a 1.5 Tesla magnet in males below 901 ms and females below 916ms

- Increase of either N-terminal pro-natriuretic brain peptide (NT-proBNP) above the upper limit of normal for age and gender OR an increase of high sensitivity troponin (a surrogate marker of fibrosis) more than 2 times the upper limit of the normal range

Comments:

1. Many of the cardiac manifestations may be influenced by the presence of hypertension. In the event of significant hypertension, adequate control of hypertension for a 12 month period should be considered first.

2. Cardiac MRI provides significant data above that which is obtained by echocardiography and should be considered as an investigation to quantitate cardiac involvement in Fabry patients being considered for disease specific therapy where access to cardiac MRI is available. If cardiac MRI is not available, echocardiography with contrast also can provide additional information on cardiac status beyond that available with conventional echocardiography.

3. Given the development of cardiac fibrosis with late enhancement on cardiac MRI but normal left ventricular (LV) wall thickness (<12 mm) in a significant fraction of Fabry female heterozygotes (Niemann 2011), a lower threshold of LV wall thickness of ≥ 11 mm is recommended as a criterion for disease specific therapy in this group. As women are now recognized to develop left ventricular fibrosis in the absence of LVH, regular cardiac MRI may be preferred to echocardiogram in some women (Niemann 2011). T1 values (using SASHA protocol) can be low in women prior to the development of either left ventricular hypertrophy or ventricular fibrosis and low T1 values can be one cardiac indication for therapy (Hazari 2018; Nordin 2018). Patients who cannot undergo a contrast MRI to look for fibrosis due to the presence of CKD stage 3 or higher could be screened with high sensitivity troponin levels as these are higher in patients with underlying fibrosis than in patients with no fibrosis (Seydelmann 2016). Consultation with local laboratory to interpret troponin levels (based on local normative data) in the context of renal insufficiency is recommended.

4. The identification of LV diastolic dysfunction by cardiac tissue Doppler imaging is an important feature of Fabry cardiomyopathy as this can be corrected by ERT prior to the development of cardiac fibrosis (Koeppel 2012). Data is lacking at this time on the effects of chaperone therapy on tissue Doppler imaging in patients. All other causes of these cardiac features need to be excluded. A cardiology consultation may be required.

5. Consideration should be given to a left ventricular biopsy if there is any doubt as to the diagnosis. Biopsy may help confirm the diagnosis of Fabry disease in patients in whom the diagnosis is not clear (e.g. those patients where GLA mutation analysis reveals a variant of unknown significance) but the finding of changes on a cardiac biopsy are not an indication for therapy – i.e. cardiac findings on pathology alone are not sufficient indication for treatment

6. Atypical chest pain in the absence of LVH may indicate the presence of small vessel disease and patients should undergo specific investigation including cardiac flow reserve assessment with a PET scan (Chimenti 2008).

7. Patients with Fabry disease are at high risk of cardiovascular brady- and tachyarrhythmias, especially if they have cardiomyopathy and cardiac fibrosis. 24 hour Holter monitoring may not be sufficient to detect all arrhythmias requiring therapy and longer cardiac monitoring (for example, 14 day Holter monitoring, loop recordings) may be indicated for this patient population. Male patients who have LVH and evidence of fibrosis on cardiac MRI and significant ventricular arrhythmias on monitoring should be considered for implantation of an intracardiac device to reduce the risk of sudden death (Baig 2017).

Neurologic Disease Evidence level III - Grade F

1 major criterion required

- Stroke or TIA documented by a neurologist diagnosed on the basis of clinical features (TIA) and/or CNS imaging criteria consistent with the diagnosis of stroke .
- Sudden onset unilateral hearing loss when other possible causes have been excluded.
- Acute ischemic optic neuropathy when all other possible causes have been excluded

Comments:

1. There is no evidence that disease specific therapy prevents stroke in Fabry disease. However, the presence of serious neurological disease (stroke, TIA, acute hearing loss) often with irreversible CNS damage indicates severe Fabry disease so for this reason, severe neurological events are considered an indication for therapy to try and prevent the development of complications outside the central nervous system. The possible beneficial impact of disease specific therapy in severe Fabry disease warrants consideration of initiating such therapy.

2. Imaging abnormalities (white matter lesions, vessel dolichoectasia, cerebral microbleeds) on their own are not an indication for enzyme replacement as their clinical significance remains unclear.

3. Anti-platelet treatment with ASA and other drugs e.g. clopidogrel, should be the mainstay of treatment unless contraindicated. Aggressive control of vascular risk factors should be implemented in all patients.

4. Drugs that are associated with an increased risk of stroke (such as hormonal forms of contraception) may theoretically increase the risk of stroke in Fabry patients. This possibility should be considered when selecting a method of birth control.

5. Cardioembolic causes of stroke are more likely to be identified with longer duration of recording of cardiac rhythm, which should influence decisions as to appropriate investigations in Fabry patients with a new stroke (e.g. holter monitor for 2+ weeks, loop recorder, Reveal device etc.). Low ejection fraction and atrial fibrillation are independent risk factors for cardioembolic stroke. Consultation with cardiologists and/or stroke neurologists regarding anticoagulation should be sought in patients with these risk factors.

Neuropathic Pain Evidence level I - Grade E

Pain is **NOT** considered an isolated indication for disease specific therapy in most patients.

If pain is the only indication for consideration of disease specific therapy, then consideration for a trial of disease specific therapy could be given as long as all of the following criteria are met:

a. Prespecified outcomes as to what would constitute a positive effect of disease specific therapy for this symptom are agreed to prior to the trial by the treating physician and the patient. Such outcomes may include tangible benefits such as:

1. Significant reduction in the need for analgesics
2. Significant reduction in time lost from work or school due to pain
3. Significant reduction in the frequency of pain crises etc.

b. Other outcomes may be appropriate treatment targets in some patients and can be determined prior to a trial of therapy on a patient by patient basis. Improvements in validated pain scoring materials can be included as secondary outcomes but should not replace more tangible outcomes

c. Adequate data are to be collected prior to the start of the disease specific therapy trial to establish a baseline – e.g. a review of use of prescription medication and time lost from work or school

d. Agreement is obtained from the patient and documented in the health record that disease specific therapy will be stopped if the prespecified outcomes are not met and no other indications for disease specific therapy are present.

Comments:

1. Short term controlled clinical trials show conflicting data on the efficacy of ERT for pain (Eng 2001; Schiffman 2001) and effects that have been seen are present within 6-12 months although data are conflicting on this point. There is a paucity of controlled clinical trial data documenting the long term efficacy of ERT on pain in patients with Fabry disease. Analysis of controlled data that do exist do not support a durable effect of ERT on pain in patients with Fabry disease (Wyatt 2012; Alegra 2012; El Dib 2016)
2. Switching from ERT to chaperone therapy with migalastat did not result in any changes in patient reported pain (Hughes 2017) so ongoing pain in ERT treated patients is not a reason to consider switching modalities of therapy.
3. All other strategies should be considered as treatments of choice for pain in patients with Fabry disease. These should include physical strategies (avoidance of pain triggers such as temperature extremes etc.), supportive care (management of associated anxiety, depression, and sleep disturbance), and pharmacological strategies (anticonvulsants, NSAIDs in patients with normal renal function, analgesics). Referral to a specialist in the management of chronic pain may be needed.
4. While opiate analgesics may play a role in the treatment of severe acute Fabry neuropathic pain crises in the emergency room, such agents **should be avoided** where possible in the management of chronic pain in Fabry patients as in patients with other types of non-cancer pain. Recent guidelines on the use of opiates in patients with non-cancer pain have been published (Busse 2017) and are a useful reference for clinicians treating such patients.
5. Pain is a major predictor of quality of life in patients with Fabry disease. However, disease specific therapy with ERT did not demonstrate an impact on self-reported quality of life in a large cohort of patients with Fabry disease from two expert centers (Arends 2018). Physicians should be aware of the large impact of pain on self-reported quality of life to ensure optimal use of available resources in patients with pain as a symptom of Fabry disease.
6. Although neuropathic pain is the most well known feature of Fabry disease, men and women with Fabry disease who are below the age of 50 also have an increased prevalence of joint pain relative to age-matched controls (Ivleva 2017) and would require different types of treatment relative to neuropathic pain. Clinical evaluation as to the source of the pain is needed to ensure appropriate targeted therapy.

Gastrointestinal Disease Evidence level II-3 - Grade B.

- Significant gastrointestinal symptoms unresponsive to other measures for at least six months or associated with poor growth or significant reduction in quality of life.

Comment:

There is a high prevalence of positive tests for H. pylori and bacterial overgrowth in Fabry patients when compared with controls populations and these patients are more symptomatic than those without overgrowth and respond to targeted therapy. (Franceschi 2015). Patients with prominent GI symptoms should be screened for these complications and have a trial of therapy if appropriate before considering enzyme replacement therapy as a treatment for GI symptoms.

Treatment initiation in patients above the age of 65 years of age

Age per se is not a contraindication to disease specific therapy. However, there are no studies systematically evaluating the benefits of ERT or chaperone initiation in patients ages 65 and older. Data from international registries (Lidove 2016) show that the non-classic cardiac phenotype of Fabry disease dominates in this age group and that other manifestations of Fabry disease which are responsive to disease specific therapy such as renal events are uncommon. It may be difficult to distinguish Fabry related cardiac events from those related to normal aging processes in patients of this age group. As the benefits of disease specific therapy on progressive cardiac enlargement related to Fabry disease are seen over decades of disease progression, patients in this age group with asymptomatic mild to moderate LVH who are started on such treatment may not always be expected to get benefit from it although patients with other Fabry related symptoms (such as microvascular angina) may benefit from a trial of disease specific therapy. Supportive care including cardiovascular risk factor modification is likely of even more benefit in the older age group and should therefore be a primary focus of Fabry-related care.

Contraindications to disease specific therapy Evidence level II-I - Grade E

Disease specific therapy is not recommended in the presence of the following:

- Pregnancy and lactation. Pregnancy is a relative contraindication to ERT but patients on migalastat therapy should be advised to stop the chaperone therapy prior to conception and remain off it while breastfeeding and to use adequate contraception while taking migalastat therapy. Patients in whom disease specific therapy is medically advisable during pregnancy should be treated with ERT rather than migalastat therapy. A number of successful pregnancies have been reported in Fabry women receiving both forms of ERT (Kalkum et al 2009; Germain et al 2010 and others).
- Severe disease or concomitant medical condition in which death is expected within a year (absolute contraindication)
- Presence of a severe co-morbid condition such that ERT for Fabry disease is unlikely to significantly improve quality of life (absolute contraindication)
- Other conditions in which the benefit to risk ratio for ERT use is not favourable (absolute contraindication)
- Presence of IgE antibody to ERT; this may be associated with anaphylaxis (absolute contraindication)

Withdrawal of disease specific therapy Evidence level II-2 - Grade E

Consideration should be given to discontinuation of disease specific therapy if there is evidence that the patient is not responding to treatment after a reasonable period of observation, of at least a year.

The treating physician should discuss withdrawal of disease specific therapy with the Fabry disease patient under the following circumstances:

- Patient request.
- Life expectancy less than one year due to severe comorbid illness or due to severe Fabry disease with end stage heart failure if not a candidate for heart transplantation.
- Permanent severe neurocognitive decline of any cause.
- Severe reduction in quality of life and functional status despite disease specific therapy.
- Persistent life threatening or severe infusion associated reactions that do not respond to prophylaxis e.g. anaphylaxis.
- Persisting IgE antibody against agalsidase.
- Lack of response to disease specific therapy in standard dose given for a minimum of 1 year when the sole indication for disease specific therapy is neuropathic pain.
- Lack of response to disease specific therapy in standard dose given for a minimum of 1 year when the sole indication for disease specific therapy is the presence of severe gastrointestinal symptoms.
- Lack of response to disease specific therapy of organ involvement that initially mandated treatment start. In such patients, ongoing cardiovascular risk factor modification may still be indicated and such patients should continue to be followed as data on the history of patients in whom disease specific therapy is stopped because of lack of response is urgently needed
- Poor patient adherence to disease specific therapy,
 - This will be defined differently in different jurisdictions and should be a topic of discussion between the patient and their physician prior to starting disease specific therapy

Non-disease specific therapy for patients with Fabry disease

A comprehensive list of the morbidities seen in patients with Fabry disease and the therapeutic goals for therapy with an emphasis on non-disease specific therapy has been published (Wanner et al 2018).

Screening for risk factors for cardiovascular and cerebrovascular disease

- Diabetes mellitus
- Hypertension
- Hyperlipidemia
- Smoking
- Positive family history of cardiovascular or cerebrovascular disease
- Sedentary life style
- Microalbuminuria
- Chronic kidney disease

These risk factors should be sought out in all patients with Fabry disease and aggressive treatment provided to reduce these influences recognizing that they will promote atherosclerotic vascular disease that would be superimposed on the vascular damage of Fabry disease. Guidelines for the management of blood pressure, lipids, and glycemic control as well as those for the use of anti-platelet agents at high vascular risk should be followed in all adult patients without contraindications.

Management of atrial fibrillation

Patients with Fabry disease who have been diagnosed with atrial fibrillation (either paroxysmal bursts of atrial fibrillation which are sustained for 6 seconds or longer or chronic atrial fibrillation) should be anticoagulated. This is not a patient population in whom the CHADS scoring system should be applied as this scoring system is for patients who do not have underlying heart disease. As almost all adults with Fabry disease will have evidence of infiltration on cardiac T1 imaging, they are considered to have structural heart disease and therefore should be anticoagulated if atrial fibrillation is identified (Yogasundaram 2017). A 2018 paper suggests that Fabry disease was associated with stroke risk similar to lowering the threshold for anticoagulation of the CHA2DS2-VASc score (Liu 2018) consistent with this recommendation.

Management of Hypertension

Hypertension should be diagnosed and promptly treated; treatment values should be directed towards SPRINT target values (Yogasundaram 2017; Kramer 2015; Putko 2015). Blood pressure control is essential to minimize renal and cardiac damage in

patients with Fabry disease. Agents that block the renin-angiotensin system (ACE inhibitors, angiotensin-receptor blockers) are considered the first line of therapy.

Depression and anxiety

Depression and anxiety are common in patients with Fabry disease (Ali 2017 and others). Screening with commonly used tools (such as the validated depression and anxiety indices) may help identify patients who would benefit from counseling and/or medical therapy for these symptoms.

Table 2. Levels of evidence and strength of recommendations

Level of Evidence	Description
I	Evidence obtained from at least one properly randomized trial.
II-1	Evidence obtained from well-designed controlled trials without randomization.
II-2	Evidence obtained from well-designed cohort or case-controlled analytical studies, preferably from more than one centre or research group.
II-3	Evidence obtained from comparisons between times and places, with or without the intervention. Dramatic results in uncontrolled experiments could also be included in this category.
III	Opinions of respected authorities, based on clinical experience, descriptive studies or reports of expert committees.
Grade	Description
A	There is good evidence to recommend the clinical preventive action
B	There is fair evidence to recommend the clinical preventive action
C	The existing evidence is conflicting and does not allow a recommendation to be made for or against use of the clinical preventive action: however, other factors may influence decision-making.
D	There is fair evidence to recommend against the clinical preventive action.
E	There is good evidence to recommend against the clinical preventive action.
F	There is insufficient evidence (in quantity or quality) to make a recommendation; however, other factors may influence decision making

Table adapted from Canadian Task Force on the Periodic Health Examination. The periodic health examination. CMAJ 1979;121:1193-254.

Disclosures

Dr. Bichet has received consultancy and speaker fees from Sanofi-Genzyme, Shire Inc. and Amicus Therapeutics Inc. These activities and grant support are declared and updated every year for the Department of Medicine, University of Montreal, and Hôpital du Sacré-Coeur, Montreal Quebec.

Dr. Iwanochko has received honoraria, from Sanofi-Genzyme and Shire Inc.

Dr. Khan has received any combination of speaker's fees, travel grants, unrestricted educational grants and research grants from Actelion, Alexion, Amicus, Biomarin, Cytonet LLC, Horizon Pharma, Resverlogix, Sanofi-Genzyme, Shire Inc. and Ultragenyx. He also has a technology transfer agreement with the University Health Network for gene therapy for Fabry disease.

Dr. Moore has received research, unrestricted educational, and travel grants for attendance at conferences, as well as honoraria for presentations at conferences from Shire Inc. Dr. Moore is further the PI on the Canadian Fabry Stroke Screening Study funded by an unrestricted educational grant from Shire HGT.

Dr. Oudit has received honoraria and unrestricted research grants from Sanofi-Genzyme, has served as an advisor for Glaxo-Smith-Kline and holds a patent for a proteomic biomarker panel for Fabry disease.

Dr. Sirrs has received honoraria, speaker's fees, or travel grants Sanofi-Genzyme, Shire Inc, Actelion, Pfizer, Amicus and Alexion and has participated in research projects funded by Sanofi-Genzyme, Shire Inc, Amicus and BioMarin.

Dr. West has received honoraria, consultancy fees and/or research funding from Actelion Pharmaceutical Inc, Alexion, Amicus Therapeutics, AvroBio, Excelsior Biopharma Inc, Sanofi-Genzyme, Shire Inc and Sumitomo Pharma.

References cited in the guidelines

Alegria T, Vairo F, de Souza MV et al. Enzyme replacement therapy for Fabry disease: A systematic review and meta-analysis. *Genet Mol Biol.* 2012;35:947-54.

Ali N, Gillespie S and Laney D. Treatment of depression in adults with Fabry disease. *JIMD Reports* DOI10.1007/8904_2017_21.

Apelland T, Guide E, Strom EK et al. Familial globotriaosylceramide-associated cardiomyopathy mimicking Fabry disease. *Heart* 2014;100:1793-98.

Arends M, Biegstraaten M, Wanner C et al. Agalsidase alfa versus agalsidase beta for the treatment of Fabry disease: an international cohort study. *J Med Genet.* 2018;55:351-58.

Arends M, Korver S, Hughes DA et al. Phenotype, disease severity, and pain are major determinants of quality of life in Fabry disease: results from a large, multicenter cohort study. *J Inher Metab Dis.* 2018;41:141-9.

Baig S, Edward NC, Kotecha D et al. Ventricular arrhythmia and sudden cardiac death in Fabry disease: a systematic review of risk factors in clinical practice. *Europace.* 2017;(0):1-9.

Bell CJ, Dinwiddie DL, Miller NA et al. Carrier testing for severe childhood recessive diseases by Next-Generation sequencing. *Sci Transl Med.* 2011;3:65ra4. doi: 10.1126/scitranslmed.3001756.

Benjamin E, Valle M, Wu X et al. The validation of pharmacogenetics of the identification of Fabry patients to be treated with migalastat. *Genet Med* advance online publication 22 September 2016.

Busse J, Graigie S, Juurlink D et al. Guideline for opioid therapy and chronic noncancer pain *CMAJ* 2017 May 8;189:E659-66.

Canadian Task Force on the Periodic Health Examination. The periodic health examination. *Can Med Assoc J* 1979;121:1193-254.

Chimenti C, Morgante E, Tanzilli G, Mangieri E, Critelli G, Gaudio C, Russo MA, Frustaci A. Angina in Fabry disease reflects coronary small vessel disease. *Circulation Heart Failure* 2008;1:161-169.

Counahan R, Chantler C, Ghazali SI, Kirkwood B, Rose F, Barratt TM. Estimation of glomerular filtration rate from plasma creatinine concentration in children. *Archives of Diseases of Childhood* 1976;51:875-878.

Data on file at Genzyme:

http://www.genzymeclinicalresearch.com/home/search_clinical_trial_results/fabrazyme_study3.asp

El Dib R, Gomma H, Carvalho RP et al. Enzyme replacement therapy for Anderson-Fabry disease. *Cochrane Database of Systematic Reviews*. Database of Systematic Reviews. 2016, Issue 7. DOI:10.1002/14651858.CD006663.pub4

El Dib R, Gomma H, Ortiz A et al. Enzyme replacement therapy for Anderson-Fabry disease: A complementary overview of a Cochrane publication through a linear regression and a pooled analysis of proportions from cohort studies. *PLOS One*. 2017; <https://doi.org/10.1371/journal.pone.0173358>.

Eng CM, Guffon N, Wilcox WR et al. Safety and efficacy of recombinant human alpha-galactosidase A replacement therapy in Fabry's disease. *N Engl J Med*. 2001;345:9-16.

Franceschi F, Zampetti A, Gasparri GGA. Helicobacter pylori and small intestinal bacterial overgrowth in Fabry disease. *Digestive and Liver Diseases*. 2015;47:618-19.

Frustaci A, Russo M, Chimenti C. Paradoxical response to enzyme replacement therapy of Fabry Disease cardiomyopathy. DOI: 10.1161/CIRCIMA.

Germain DP, Bruneval P, Tran TC, Balouet P, Richalet B, Benistan K. Uneventful pregnancy outcome after enzyme replacement therapy with agalsidase beta in a heterozygous female with Fabry disease: A case report. *Eur J Med Genet*. 2010 Mar-Apr;53(2):111-2.

Germain DP, Nicholls H, Bichet DG et al. Treatment of Fabry's disease with the pharmacologic chaperone migalastat. *N Engl J Med* 2016 ; 375:545-55.

Goker-Alpan O, Nedd K, Shankar SP et al. Effect and tolerability of agalsidase alfa in patients with Fabry disease who were treatment naïve or formerly treated with agalsidase beta or agalsidase alfa. *JIMD Reports* 2015 doi:10.1007/8904_2015_422.

Guerard N, Oder D, Nordbeck P et al. Lucerastat, an iminosugar for substrate reduction therapy: tolerability, pharmacodynamics, and pharmacokinetics in patients with Fabry disease on enzyme replacement. *Orphanet J Rare Dis*. 2017; doi: 10.1002/cpt.790.

Hazari H, Belinkie I, Kryski A et al. Comparison of Cardiac magnetic resonance imaging and echocardiography in assessment of left ventricular hypertrophy in Fabry disease. *Can J Cardiol*. 2018; 34;1041-47.

Hughes DA, Deegan PB, Milligan A et al. A randomized, double-blind, placebo-controlled, crossover study to assess the efficacy and safety of three dosing schedules of agalsidase alfa enzyme replacement therapy for Fabry disease. *Mol Genet Metab*.

2013;109:269-75.

Hughes D, Nicholls K, Shankar SP et al. Oral pharmacological chaperone migalastat compared with enzyme replacement therapy in Fabry disease: 18-month results from the randomised phase III ATTRACT study. *J Med Genet* 2017; **54** :288–296.

Ivleva A, Weith E, Mehta A et al. The influence of patient-reported joint manifestations on quality of life in Fabry patients. *JIMD Rep.* 2017;doi:10.1007/8904_2017_84.

Kalkum G, Macchiella D, Reinke J, Kölbl H, Beck M. Enzyme replacement therapy with agalsidase alfa in pregnant women with Fabry disease. *Eur J Obstet Gynecol Reprod Biol.* 2009 May;144(1):92-3.

Koeppe S, Neubauer H, Breunig F, Weidemann F, Wanner C, Sandstede J, Machann W, Hahn D, Köstler H, Beer M. MR-based analysis of regional cardiac function in relation to cellular integrity in Fabry disease. *Int J Cardiol* 2012;160:53-58.
doi:10.1016/j.ijcard.2011.03.023

Kramer J, Bijmens B, Stork S et al. Left ventricular geometry and blood pressure as predictors of adverse progression of Fabry cardiomyopathy. *PLoS ONE* 10(11):e0140627. doi:10.1371/journal.pone.0140627

Kramer J, Lenders M, Canaan-Kuhl S, Nordbeck P, Uceyler N, Blaschke D, Duning T, Reiermann S, Stypmann J, Brand SM, Gottschling T, Stork S, Wanner C, Sommer C, Brand E and Weidemann F. Fabry disease under enzyme replacement therapy-new insights in efficacy of different dosages. *Nephrol Dial Transplan.* 2018;8:1362-72.

Lenders M, Canaan-Kuhl S, Kramer J et al. Patients with Fabry disease after enzyme replacement therapy dose reduction and switch – 2 year follow-up. *J Am Soc Nephrol.* 2015;doi:10.1681/ASN.20150303337.

Levey AS, Stevens LA, Schmid CH, Zhang Y, Castro III AF, Feldman HI, Kusek JW, Eggers P, Van Lente F, Greene T, Coresh J, for the CKD-EPI (Chronic Kidney Disease Epidemiology Collaboration). A new equation to estimate glomerular filtration rate. *Annals of Internal Medicine* 2009;150:604-612.

Lidove O, Barbey F, Niu DM et al. Fabry in the older patient: clinical consequences and possibilities for treatment. *Molecular Genetics and Metabolism* 118;2016: 319-325.

Liu D, Hu K, Schmidt M et al. Value of the CHA2DS2-VASc score and Fabry-specific score for predicting new-onset or recurrent stroke/TIA in Fabry disease patients without atrial fibrillation. *Clin Res Cardiol.* 2018 doi.org/10.1007/s00392-018-1285-4

Maixnerova D, Tesar V, Rysava R et al. The coincidence of IgA nephropathy and Fabry disease. *BMC Nephrology.* 2013;14:6.

Najafian B, Svarstad E, Bostad L et al. Progressive podocyte injury and globotriaosylceramide accumulation in young patients with Fabry disease. *Kidney Int.* 2011;79:663-70.

Niemann M, Herrmann S, Hu K, Breunig F, Strotmann J, Beer M, Machann W, Voelker W, Ertl G, Wanner C, Weidemann F. Differences in Fabry cardiomyopathy between female and male patients: consequences for diagnostic assessment. *Journal of the American College of Cardiology Cardiovascular Imaging.* 2011;4:592-601.

Nordin S, Kozor R, Medina-Menacho et al. Proposed stages of myocardial phenotype development in Fabry disease. *JACC Cardiovascular Imaging.* 2018; DOI: 10.1016/j.jcmg.2018.03.020.

Pisani A, Bruzzese D, Sabbatini M et al. Switch to agalsidase alfa after shortage of agalsidase beta in Fabry disease: a systematic review and meta-analysis of the literature. *Genet Med* advance online publication 8 September 2016. *PLoS ONE*11(8):e0161330.

Putko BN, Yogasundaram H, Chow K et al. Normal left-atrial structure and function despite concentric left-ventricular remodelling in a cohort of patients with Anderson-Fabry disease. *European Heart Journal – Cardiovascular Imaging* doi:10.1093/ehjci/jev057.

Richards S, Aziz N, Bale S et al. Standards and guidelines for interpretation of sequence variants: a joint consensus recommendation of the American College of Medical Genetics and Genomics and the Association for Molecular Pathology. *Genet Med.* 2015;17:405-24.

Rombach SM, Baas MC, ten Berge IJM, Krediet RT, Bemelman FJ, Hollak CEM. The value of estimated GFR in comparison to measured GFR for the assessment of renal function in adult patients with Fabry disease. *Nephrology Dialysis and Transplantation* 2010;25:2549-2556.

Schiffmann R, Kopp JB, Austin HA et al. Enzyme replacement therapy in Fabry disease: A randomized controlled trial. *JAMA* 2001; 285:2743-9.

Schiffmann R, Askari H, Timmons M, Robinson C, Benko W, Brady RO, Ries M. Weekly enzyme replacement therapy may slow decline of renal function in patients with Fabry disease who are on long-term weekly dosing. *J Am Soc Nephrol* 2007;18:1576-1583.

Schiffmann R, Forni S, Swift C et al. Risk of death in heart disease is associated with elevated urinary globotriaosylceramide. *J Am Heart Assoc.* 2014;3:e000394 doi: 10.1161/JAHA.113.000394.

Schiffmann R, Swift C, Wang X, Blankenship D, Ries M. A prospective 10-year study of individualized, intensified enzyme replacement therapy in advanced Fabry disease. *J*

Inherit Metab Dis. 2015;38:1129-1136.

Seydelmann N, Liu D, Kramer J et al. High-Sensitivity Troponin: A Clinical Blood Biomarker for Staging Cardiomyopathy in Fabry Disease. *J Am Heart Assoc.* 2016;5:e002839doi:10.1161/JAHA.115.002839.

Smid BE, van der Tol L, Cecchi F et al. Uncertain diagnosis of Fabry disease; Consensus recommendation on diagnosis in adults with left ventricular hypertrophy and genetic variants of unknown significance. *Int J Cardiol.* 2014;177:400-8

Sirrs SM, Bichet DG, Casey R et al. Outcomes of patients followed through the Canadian Fabry Disease Initiative. *Mol Genet Metab.* 2014;11;499-506.

Sirrs, S, Bichet DG, Iwanochko M, Khan A, Doucette S, LeMoine K, West ML. for the CFDI Investigators Group. Differential effects of agalsidase alfa and agalsidase beta in Fabry outcomes: 10 year outcomes from the Canadian Fabry Disease Initiative. *J Inherit Metab Dis.* 2018;41(Suppl 1):S188 (abstract 373).

Tondel C, Ramaswami U, Aakre KM, Wijburg F, Bouwman M, Svarstad E. Monitoring renal function in children with Fabry disease: comparisons of measured and creatinine-based estimated glomerular filtration rate. *Nephrology Dialysis and Transplantation* 2010;25:1507-1513.

Tsuboi K and Yamamoto H. Clinical course of patients with Fabry disease who were switched from agalsidase-beta to agalsidase-alfa. *Genet Med.* 2014;10:766-72.

van der Tol L, Smid BE, Poorthuis BJHM et al. A systematic review on screening for Fabry disease: prevalence of individuals with genetic variants of unknown significance. *J Med Genet.* 2014;51:1-9.

Walters-Sen L, Hashimoto S, Thrush DL et al. Variability in pathogenicity prediction programs: impact on clinical diagnostics. *Mol Genet Genomic Med* 2015;3:99-110.

Wanner C, Barad M, Baron R et al. European expert consensus statement on therapeutic goals in Fabry disease. *Mol Genet Metab.* 2018;124:189-203.

Warnock DG, Thomas CP, Vujkova B et al. Antiproteinuric therapy and Fabry nephropathy: factors associated with preserved kidney function during agalsidase-beta therapy. *J Med Genet.* 2015;52:860-6.

West ML, Bichet DG, Casey R et al. Canadian Fabry Disease Initiative Study (CFDI): 8 year outcomes of a randomized controlled trial of enzyme replacement therapy (ERT). Abstract presentation at the SSIEM Meeting, Rome It Sept 2. 2016a.

West ML, Bichet DG, Casey R et al. Switch of enzyme replacement therapy (ERT) in the Canadian Fabry Disease Initiative Study (CFDI): Intermediate follow-up at three and

a half years. Abstract presentation at the Garrod Society Meeting, Halifax Nova Scotia May 19-21 2016b.

Wyatt K, Henley W, Anderson L et al. The effectiveness and cost-effectiveness of enzyme and substrate replacement therapies; a longitudinal cohort study of people with lysosomal storage disorders. *Health Tech Ass.* 2012;16:10.3310/hta16930.

Yogasundaram H, Kim D, Oudit O et al. Clinical features, diagnosis, and management of patients with Anderson-Fabry cardiomyopathy. *Canadian Journal of Cardiology* 33 (2017) 883-897.

Appendix 1. Literature reviewed for 2018 version of CFDI guidelines

Aguiar P, Azevedo O, Pinto R et al. Biomarkers of Myocardial Fibrosis: Revealing the natural history of Fibro genesis in Fabry disease cardiomyopathy. *J Am Heart Assoc.* 2018;7:e007124.DOI: 10.1161/JAHA.117.007124.

Alcalay RN, Wolf P, Levy OA et al. Alpha galactosidase A activity in Parkinson's disease. *Neurobiology of Disease* 112 (2018) 85-90.

Alharbi FJ, Baig S, AurayGlobotriaosylsphingosine (Lyso-Gb3) as a biomarker for cardiac variant (N215S) Fabry disease. *Journal of Inherited Metabolic Disease*(2018) 41:239–247.

Areds M, Korver S, Hughes DA et al. Phenotype, disease severity and pain are major determinants of quality of life in Fabry disease: results from a large multicenter cohort study. *J Inherit Metab Dis* (2018) 41:141–149 DOI 10.1007/s10545-017-0095-6.

Arends M, Biegstraaten M, Wanner C et al. Agalsidase alfa versus agalsidase beta for the treatment of Fabry disease: an international cohort study. *J Med Genet* 2018;55:351–358.

Baig S, Edward NC, Kotecha D et al. Ventricular arrhythmia and sudden cardiac death in Fabry disease: a systematic review of risk factors in clinical practice. *Europace* (2017)0,1–9.

Beck M, Hughes D, Kampmann C et al. Long-term outcomes with agalsidase alfa enzyme replacement therapy: Analysis using deconstructed composite events. *Molecular Genetics and Metabolism Reports* 14 (2018) 31-35.

Bird S, Hadjimichael E, Mehta A et al. Fabry disease and incidence of cancer. *Journal of Rare Diseases* (2017) 12:150 DOI 10.1186/s13023-017-0701-6.

Bird S, Hadjimichael E, Mehta A et al. Fabry disease and incidence of cancer. Bird et al. *Orphanet Journal of Rare Diseases* (2017) 12:150 DOI 10.1186/s13023-017-0701-6.

Boutin M, Menkovic I, Martineau T et al. Separation and analysis of lactosylceramide, galabiosylceramide, and globotriaosylceramide by LC-MS/MS in Urine of Fabry disease patients. *Anal. Chem.* 2017, 89, 13382-13390.

Cammarata G, Scalia S, Colomba P et al. A pilot study of circulating microRNAs as potential biomarkers of Fabry disease. *Oncotarget*, 2018, Vol. 9, (No.44), pp:27333-27345.

Chou S, Yu WC, hang YL et al. Energy utilization of induced pluripotent stem cell-derived cardiomyocyte in Fabry disease. *International Journal of Cardiology* 232 (2017)255–263.

Cocozza S, Russo C, Pisani A et al. Redefining the Pulvinar Sign in Fabry Disease. *AJNR Am J Neuroradiol* 38:2264-69.

Colomba P, Zizzo C, Alessandro R et al. Fabry disease and multiple sclerosis misdiagnosis: the role of family history and neurological signs. *Oncotarget*, 2018, Vol. 9, (No. 8), pp: 7758-7762.

De Menezes Neves PDM, Machado JR, Custodio B et al. Ultrastructural deposits appearing as “zebra bodies” in renal biopsy: Fabry disease?—comparative case reports. de Menezes Neves et al. *BMC Nephrology* (2017) 18:157. DOI 10.1186/s12882-017-0571-0.

Del Pino MD, Andres A, Bernabeu AA et al. Fabry Nephropathy: An Evidence-Based Narrative Review. *Kidney Blood Press Res* 2018;43:406-421.

Di LZ, Pichette M, Nadeau R et al. Severe Bradyarrhythmia linked to left atrial dysfunction in Fabry disease – a cross-sectional study. doi: 10.1002/clc.23019.

Doheny D, Srinivasa R, Pagant S et al. Fabry disease: prevalence of affected males and heterozygotes with pathogenic GLA mutations identified by screening renal, cardiac and stroke clinics, 1995-2017. *J Med Genet* 2018;55:261–268. doi:10.1136/jmedgenet-2017-105080.

El Dib R, Gomaa H, Ortiz A et al. Enzyme replacement therapy for Anderson- Fabry disease: A complementary overview of a Cochrane publication through a linear regression and a pooled analysis of proportions from cohort studies. *PLoS ONE* 12 (3): e0173358.

Ersoz MG and Ture G. Cilioretinal artery occlusion and anterior ischemic optic neuropathy as the initial presentation in a child female carrier of Fabry disease. *Int Ophthalmol* (2018) 38:771–773.

Ersozlu S, Desnick RJ, Huynh-Do U et al. Long-Term Outcomes of Kidney Transplantation in Fabry Disease. DOI: 10.1097/TP.0000000000002252.

Ferri L, Malesci D, Fioraanti A et al. Functional and pharmacological evaluation of novel GLA variants in Fabry disease identifies six (two de novo) causative mutations and two amenable variants to the chaperone DGJ. *Clinica Chimica Acta* 481 (2018) 25–33.

Franzen D, Haile SR, Kasper DC et al. Pulmonary involvement in Fabry disease: effect of plasma globotriaosylsphingosine and time to initiation of enzyme replacement therapy. *BMJ Open Res* 2018;5:e000277. doi:10.1136/bmjresp-2018-000277.

Germain DP, Brand E, Burkina A et al. Phenotypic characteristics of the p.Asn215Ser (p.N215S) GLA mutation in male and female patients with Fabry disease: A multicenter Fabry Registry study. DOI: 10.1002/mgg3.389.

Godel T, Baumer P, Pham M et al. Human dorsal root ganglion in vivo morphometry and perfusion in Fabry painful neuropathy. *Neurology* 2017;89 1274-1282.

Guerard N, Morand O and Dingemans J. Lucerastat, an iminosugar with potential as substrate reduction therapy for glycolipid storage disorders: safety, tolerability, and pharmacokinetics in healthy subjects. DOI 10.1186/s13023-017-0565-9.

Guerard N, Oder D, Nordbeck P et al. Lucerastat, an Iminosugar for Substrate Reduction Therapy: Tolerability, Pharmacodynamics, and Pharmacokinetics in Patients With Fabry Disease on Enzyme Replacement. doi:10.1002/cpt.790.

Guerard N, Zwingelstein C and Dingemans J. Lucerastat, an iminosugar for substrate reduction therapy: pharmacokinetics, tolerability, and safety in subjects with mild, moderate, and severe renal function impairment. DOI: 10.1002/jcph.944.

Hasholt L, Ballegaard M, Bundgaard H et al. The D313Y variant in the *GLA* gene – no evidence of a pathogenic role in Fabry disease. *77*:8, 617-621, DOI: 10.1080/00365513.2017.1390782.

Hauth L, Kerstens J, Yperzeele L et al. Galactosidase alpha p.a143t Variant Fabry Disease May Result in a phenotype With Multifocal Microvascular Cerebral Involvement at a Young age. doi: 10.3389/fneur.2018.00336.

Hazari H, Belenkie I, Kryski A et al. Comparison of cardiac magnetic resonance Imaging and echocardiography in assessment of left ventricular hypertrophy in Fabry disease. *Canadian Journal of Cardiology* 34 (2018) 1041-1047).

Heo SH, Kang E, Kim YM et al. Fabry disease: characterisation of the plasma proteome pre- and post-enzyme replacement therapy. *J Med Genet* 2017;54:771–780. doi:10.1136/jmedgenet-2017-104704.

Hongo K, Ito K, Date T et al. The beneficial effects of long-term enzyme replacement therapy on cardiac involvement in Japanese Fabry patients. *Molecular Genetics and Metabolism* 124 (2018) 143-151.

Hsu MJ, Chang FP, Lu YH et al. Identification of lysosomal and extralysosomal globotriaosylceramide (Gb3) accumulations before the occurrence of typical pathological changes in the endomyocardial biopsies of Fabry disease patients. *Genetics in Medicine* (2018) <https://doi.org/10.1038/s41436-018-0010-z>.

Ikegawa Y, Shiraishi A, Hayashi Y et al. In Vivo Confocal Microscopic Observations of Vortex Keratopathy in Patients with Amiodarone-Induced Keratopathy and Fabry disease. *Journal of Ophthalmology* Volume 2018, Article ID 5315137,7 pages.

Ileva A, Weith E, Mehta A et al. The influence of Patient-Reported joint manifestations on quality of life in Fabry patients. *JIMD Reports* DOI 10.1007/8904_2017_84.

Jiraskova A, Bortolussi G, Dostalova G et al. Serum Bilirubin Levels and Promoter Variations in HMOX1 and UGT1A1 Genes in Patients with Fabry Disease. Volume 2017, Article ID 9478946, 6 pages <https://doi.org/10.1155/2017/9478946>.

Juchniewicz P, Kloska A, Tylki-Szymanska A et al. Female Fabry disease patients and X-chromosome inactivation. *Gene* 641 (2018) 259–264.

Karur GR, Robison S, Iwanochko Use of myocardial T1 mapping at 3.0 T to differentiate anderson-Fabry disease from hypertrophic cardiomyopathy. *Radiology* 2018; 288:398–406.

Kokotis P, Uceyler N, Werner C et al. Quantification of sweat gland innervation in patients with Fabry disease: A case-control study. *Journal of the Neurological Sciences* 390 (2018) 135-138.

Koping M, Shehata-Dieler W, Cebulla M et al. Cardiac and renal dysfunction is associated with progressive hearing loss in patients with Fabry disease. *PLoSOne*. Doi: <https://doi.org/10.1371/journal.pone.0188103>

Korver S, Vergouwe M, Hollak CEM et al. Development and clinical consequences of white matter lesions in Fabry disease: a systematic review. *Molecular Genetics and Metabolism*. <https://doi.org/10.1016/j.ymgme.2018.08.014>.

Koulousios K, Stylianou K, Pateinakis P et al. Fabry disease due to D313Y and novel GLA mutations. *BMJ Open* 2017;7:e017098. doi:10.1136/bmjopen-2017-017098.

Kozor R, Nordin S, Treibel TA et al. Insight into hypertrophied hearts: a cardiovascular magnetic resonance study of papillary muscle mass and T1 mapping. *European Heart Journal– Cardiovascular Imaging* (2017)18, 1034–1040.

Kramer J, Lenders M, Canaan-Kuhl S et al. Fabry disease under enzyme replacement therapy—new insights in efficacy of different dosages. *Nephrol Dial Transplant* (2017) 1–11 doi: 10.1093/ndt/gfx319.

Kukacka Z, Iurascu M, Lupu L et al. Antibody epitope of human α -Galactosidase a revealed by affinity mass spectrometry: a basis for reversing immunoreactivity in enzyme replacement therapy of Fabry disease. *ChemMedChem* 2018,13,909– 915.

Kummer KK, Kalpachidou T, Kress M et al. Signatures of Altered Gene Expression in Dorsal Root Ganglia of a Fabry Disease Mouse Model. doi: 10.3389/fnmol.2017.00449.

Kuramoto Y, Naito A, Tojo H et al. Generation of Fabry cardiomyopathy model for drug screening using T induced pluripotent stem cell-derived cardiomyocytes from a female Fabry patient. *Journal of Molecular and Cellular Cardiology* 121 (2018) 256–265.

Lambe J, Noone I, Lonergan R et al. Auditing the frequency and the clinical and economic impact of testing for Fabry disease in patients under the age of 70 with a stroke admitted to Saint Vincent's University Hospital over a 6-month period.

Lavalle L, Thomas AS, Beaton B et al. Phenotype and biochemical heterogeneity in late onset Fabry disease defined by N215S mutation. *PLoS ONE* 13 (4): e0193550. <https://doi.org/10.1371/journal.pone.0193550>.

Lenders M, Schmidt B, Brand SM et al. Characterization of drug-neutralizing antibodies in patients with Fabry disease during infusion. <http://dx.doi.org/10.1016/j.jaci.2018.01.003>.

Likhitsup A, Helzberg JH, Alba LM et al. Persistent alpha-galactosidase deficiency after simultaneous Liver-kidney transplantation in a patient with Fabry disease. DOI: 10.1097/TP.0000000000002257.

Liu D, Hu K, Schmidt M et al. Value of the CHA2DS2-VASc score and Fabry-specific score for predicting new-onset or recurrent stroke/TIA in Fabry disease patients without atrial fibrillation. <https://doi.org/10.1007/s00392-018-1285-4>.

Liu D, Oder D, Salinger T et al. Association and diagnostic utility of diastolic dysfunction and myocardial fibrosis in patients with Fabry disease. *Open Heart* 2018;5:e000803. doi:10.1136/openhrt-2018-000803.

Loeb J, Feldt-Rasmussen U, Madsen CV et al. Cognitive Impairments and Subjective Cognitive Complaints in Fabry Disease: A Nationwide Study and Review of the Literature. *JIMD Reports* DOI 10.1007/8904_2018_103.

Lu YH, Huang PH, Wang LY et al. Improvement in the sensitivity of newborn screening for Fabry disease among females through the use of a high-throughput and cost-effective method, DNA mass spectrometry. *Journal of Human Genetics* (2018) 63:1–8.

Mac Lochlainn DJ, McKeachie DGJ, Mehta AB et al. The utility of the FIPI score in predicting long-term clinical outcomes in

patients with Fabry disease receiving enzyme replacement therapy with agalsidase alfa. *Molecular Genetics and Metabolism* 123 (2018) 154-158

Manna R, Cauda R, Feriozzi S et al.

Recommendations for the inclusion of Fabry disease as a rare febrile condition in existing algorithms for fever of unknown origin. *Intern Emerg Med* (2017) 12:1059–1067 DOI 10.1007/s11739-017-1704-y.

Maron MS, Xin W, Sims KB et al. Identification of Fabry disease in a tertiary referral cohort of patients with hypertrophic cardiomyopathy. *The American Journal of Medicine*(2018) 131, 200.e200–200.e8.

Maruyama H, Miyata K, Mikame M et al. Effectiveness of plasma lyso-Gb3 as a biomarker for selecting high-risk patients with Fabry disease from multispecialty clinics for genetic analysis. *Genet Med* March 2018. doi:10.1038/gim.2018.31.

Maruyama H, Taguchi A, Nishikawa Y et al. Medullary thick ascending limb impairment in the *GlatmTg(CAG-A4GALT)* Fabry model mice. *FASEB J*. 2018;32;(142.103.160.110) on July 27, 2018.

Mauer M, Sokolovskiy A, Barth JA et al. Reduction of podocyte globotriaosylceramide content in adult male patients with Fabry disease with amenable *GLA* mutations following 6 months of migalastat treatment. *J Med Genet* 2017;54:781–786. doi:10.1136/jmedgenet-2017-104826.

McCloskey S, Brenna P and Sayer JA. Variable phenotypic presentations of renal involvement in Fabry disease:a case series[version 1; referees: 2 approved]. doi: 10.12688/f1000research.13708.1.

Meng XL, Arning E, Wight-Carter M et al.

Priapism in a Fabry disease mouse model is associated with upregulated penile nNOS and eNOS expression. *J Inherit Metab Dis* (2018) 41:231–23.

mesenchymal stem cells: Evidences from in vitro silencing of glucocerebrosidase (GBA) and alpha-galactosidase A (GLA) enzymes. DOI 10.1002/jcp.25807.

Moura AP, Hammerschmidt T, Deon M et al. Investigation of correlation of urinary globotriaosylceramide (Gb3) levels with markers of renal function in patients with Fabry disease. *Clinica Chimica Acta* 478 (2018) 62-67.

Muntze J, Salinger T, Gentler D et al. Treatment of hypertrophic cardiomyopathy caused by cardiospecific variants of Fabry disease with chaperone therapy. doi:10.1093/eurheartj/ehy072.

- Namazova-Baranova LS, Baranov AA, Pushkov AA et al. Fabry disease in children: a federal screening programme in Russia. *Eur J Pediatr* (2017) 176:1385–1391 DOI 10.1007/s00431-017-2992-y.
- Nordin S, Kozor R, Baig S et al. Cardiac phenotype of prehypertrophic Fabry disease. *Circ Cardiovasc Imaging* 2018;11:e007168. DOI: 10.1161/CIRCIMAGING.117.007168.
- Nordin S, Kozor R, Medina-Menacho K et al. Proposed stages of myocardial phenotype development in Fabry disease. *J Am Coll Cardiol Img* 2018.
- Nowak A, Mechtler TP, Hornemann T et al. Genotype, phenotype and disease severity reflected by serum LysoGb3 levels in patients with Fabry disease. *Molecular Genetics and Metabolism* 123 (2018) 148-153.
- Oder D, Liu D, Hu K et al. α -Galactosidase A Genotype N215S Induces a Specific Cardiac Variant of Fabry Disease. *Circ Cardiovasc Genet*. 2017;10:e001691. DOI: 10.1161/CIRCGENETICS.116.001691.
- Oder D, Liu, Uceyler N et al. Clinical impact of the alpha-galactosidase A gene single nucleotide polymorphism -10C>T. *Medicine* (2018) 97:21(e10669).
- Ortiz A and Sanchez-Nino D. Enzyme replacement therapy dose and Fabry nephropathy. *Nephrol Dial Transplant* (2018) 1–6 doi: 10.1093/ndt/gfy089.
- Ortiz A, Germain DP, Desnick RJ et al. Fabry disease revisited: Management and treatment recommendations for adult patients. *Molecular Genetics and Metabolism* 123 (2018) 416–427.
- Pasqualim G, Dos Santos BA, Giuliani R et al. Simple and efficient screening of patients with Fabry disease with high resolution melting. *Clinical Biochemistry* 53 (2018) 160-163.
- Pereira EM, da Silva AS, da Silva RN et al. CD77 levels over enzyme replacement treatment in Fabry disease family (V269M). *Braz J Nephrol*. DOI: 10.1590/2175-8239-JBN-3910.
- Peretta F, Antongiovanni N and Jaurretche S. Major organ involvement in women with Fabry disease in Argentina. *Hindawi Scientific World Journal*; 2018, <https://doi.org/10.1155/2018/6515613>.
- Phyu P, Merwick A, Davagnanam I et al. Increased resting cerebral blood flow in adult Fabry disease. *Neurology* 2018;90:e1379-e1385. doi:10.1212/WNL.0000000000005330.
- Pierre M, Salah Q, Steven H et al. Ascending aortic remodelling in Fabry disease after long-term enzyme replacement therapy. *Swiss Med Wkly*. 2017;147:w14517.

Pisani A, Annicchiarico LP, Pellegrino A et al. Parapelvic cysts, a distinguishing feature of renal Fabry disease. *Nephrol Dial Transplant* (2018) 33: 318–323 doi: 10.1093/ndt/gfx009.

Politei J, Alberton V, Amoreo O et al. Clinical parameters, LysoGb3, podocyturia, and kidney biopsy in children with Fabry disease: is a correlation possible? *Pediatric Nephrology*. <https://doi.org/10.1007/s00467-018-4006-3>.

Reisin R, Mazziotti J, Cejas LL et al. Prevalence of Fabry disease in young patients with stroke in Argentina. *Journal of Stroke and Cerebrovascular Diseases*, Vol. 27, No. 3 (March), 2018: pp 575–582.

Reisin R, Perrin A and Garcia-Pavia. Time delays in the diagnosis and treatment of Fabry disease. DOI: 10.1111/ijcp.12914.

Reuter C and Platt J. Clinical characteristics of the *GLA* N215S variant and implications for the diagnosis and management of nonclassic Fabry disease. *Circ Cardiovas Genet*; 2017; DOI: 10.1161/CIRCGENETICS.117.001918.

Rodrigues J, Azevedo O, Sousa N et al. Inner ear involvement in Fabry disease: Clinical and audiometric evaluation of a large cohort of patients followed in a reference centre. *European Journal of Medical Genetics* 61(2018) 341-347.

Ruderfer I, Shulman A, Kizhner T et al. Development and analytical characterization of pegunigalsidase alfa, a chemically cross-linked plant recombinant human α -Galactosidase-A for treatment of Fabry disease. *Bioconjugate Chem*. 2018, 29, 1630–1639.

Rybova J, Kuchar L, Hulkova H et al. Specific storage of glycoconjugates with terminal α -galactosyl moieties in the exocrine pancreas of Fabry disease patients with blood group B. *Glycobiology*, 2018;28(6); 382–391

Saccheri MC, Cianciulli TF, Licidio WC et al. Comparison of left atrial size and function in hypertrophic cardiomyopathy and in Fabry disease with left ventricular hypertrophy. *Echocardiography*. 2018; 35:643–650.

Sakuraba H, Togawa T, Tsukimura T et al. Plasma lyso-Gb3: a biomarker for monitoring Fabry patients during enzyme replacement therapy. *Clinical and Experimental Nephrology* (2018) 22:843–849.

Schiffmann R, Bichet DG, Jovanovic A et al. Migalastat improves diarrhea in patients with Fabry disease: clinical-biomarker correlations from the phase 3 FACETS trial. *Orphanet Journal of Rare Diseases* (2018) 13:68.

Schiffmann R, Swift C, McNeill N et al. Low frequency of Fabry disease in patients with common heart disease. *Genetics in Medicine*. 2017;doi:10.1038/gim.2017.175.

Schuller Y, Arends M, Korver S et al. Adaptive pathway development for Fabry disease: a clinical approach. *Drug Discovery Today*; <https://doi.org/10.1016/j.drudis.2018.02.004>.

Scionti F, Martino MTD, Sestito S et al. Genetic variants associated with Fabry disease progression despite enzyme replacement therapy. *Oncotarget*, 2017, Vol. 8, (No. 64), pp: 107558-107564.

Shah, H, Liang C, Levy OA et al. Association of low lysosomal enzymes activity with brain arterial dilatation a pilot study. *Stroke*. 2018; 49:1977-1980. DOI: 10.1161/STROKEAHA.118.021964.

Siegenthaler M, Huynh-Do U, Krayenbuehl P et al. Impact of cardio-renal syndrome on adverse outcomes in patients with Fabry disease in a long-term follow-up. *International Journal of Cardiology* 249 (2017) 261-267.

Sivley MD, Wallace EL, Warnock DG et al. Conjunctival lymphangiectasia associated with classic Fabry disease. *Br J Ophthalmol* 2018;102:54–58.

Slaats GG, Braun F, Hoehne M et al. Urine-derived cells: a promising diagnostic tool in Fabry disease patients. *Scientific Reports (2018)* 8:11042 DOI:10.1038/s41598-018-29240-w.

Sodre LSdS, Huaira RMNH, Bastos MG et al. Screening for Fabry disease in kidney disease: a cross-sectional study in males and females. *Kidney blood press Res* 2017;42:1258-1265 DOI: 10.1159/000485929.

Spada M, Baron R, Elliott PM et al. The effect of enzyme replacement therapy on clinical outcomes in paediatric patients with Fabry disease – A systematic literature review by a European panel of experts. *Molecular Genetics and Metabolism* (2018), <https://doi.org/10.1016/j.ymgme.2018.04.007>.

Spinelli L, Imbriaco M, Nappi C et al. Early cardiac involvement affects left ventricular longitudinal function in females carrying α -Galactosidase A mutation. *Circ Cardiovasc Imaging*.2018;11:e007019. DOI: 10.1161/CIRCIMAGING.117.007019.

Squillaro T, Antonucci I, Alessio N et al. Impact of lysosomal storage disorders on biology of mesenchymal stem cells: Evidences from in vitro silencing of glucocerebrosidase (GBA) and alpha-galactosidase A (GLA) enzymes. *J Cellular Physiol*; 2017;232;3454-67.

Sugarman M, Choudhury J and Jovanovic A. An atypical p.N215S variant of Fabry disease with end-stage renal failure. *Molecular Genetics and Metabolism Reports* 15 (2018) 43–45.

Svarstad E, Leh S, Skrunes R et al. Bedside stereomicroscopy of Fabry kidney biopsies: An easily available method for diagnosis and assessment of sphingolipid deposits. *Nephron* 2018;138:13–21 DOI: 10.1159/000479751.

Talbot A, Nicholls K, Fletcher JM et al. A simple method for quantification of plasma globotriaosylsphingosine: Utility for Fabry disease. *Molecular Genetics and Metabolism* 122; 2017: 121-125.

Toupin A, Lavoie P, Arthurs MF et al. Analysis of globotriaosylceramide (Gb3) isoforms/analogues in unfractionated leukocytes, B lymphocytes and monocytes from Fabry patients using ultra-high performance liquid chromatography/tandem mass spectrometry. *Analytica Chimica Acta* 1015 (2018) 35-49.

Uceyler N, Bottger J, Henkel L et al. Detection of blood Gb3 deposits as a new tool for diagnosis and therapy monitoring in patients with classic Fabry disease. *J Int Med*; 2018;doi: 10.1111/joim.12801.

Vieitez I, Souto-Rodriguez O, Fernandez-Mosquera L et al. Fabry disease in the Spanish population: observational study with detection of 77 patients. *Orphanet Journal of Rare Diseases* 2018;13:52.

Wanner C, Arad M, Baron R et al. European expert consensus statement on therapeutic goals in Fabry disease. *Molecular Genetics and Metabolism* 124 (2018) 189–203.

Welford RWD, Muhlemann A, Garzotti M et al. Glucosylceramide synthase inhibition with lucerastat lowers globotriaosylceramide and lysosome staining in cultured fibroblasts from Fabry patients with different mutation types. [Hum Mol Genet.](#) 2018 Oct 1;27(19):3392-3403

Wise AH, Yang A, Naik et al. Parkinson's disease prevalence in Fabry disease: A survey study. *Molecular Genetics and Metabolism Reports* 14 (2018) 27-30.

Yeung D, Sirrs S, Tsang M et al. Echocardiographic assessment of patients with Fabry disease. *J Am Soc Echocardiogr* 2018;31:639-49.